

GENERAL NOTES

1. Touring consoles may connect into our sACN network if desired. DHCP IP pool for touring equipment is 10.200.9.101-255.
2. The Glasshouse runs Arkaos MediaMaster 6 media server software on PC. 48 video layers can be controlled via sACN on DMX universes 17-21.
3. The Centre Followspot position can be made available on request. The centre profile on Bridge 2 is removed to accommodate this.
4. The Source 4 Par pairs are rigged and patched on the house console to emulate 2-cell blinders. The DMX address shown is the first unit of the pair, with the 2nd unit following consecutively. Touring LD's using the house console can repatch as individual units if desired.

DANCE BOOMS

1. Dance Booms are available on request (additional charges may apply) - standard placement is as shown on this plan and will require additional pre-rig time.
2. Boom heights are measured from the stage floor to the rung unless otherwise notated. Heights for booms 1-10 are taken from those noted for booms 11-12.
3. Units on booms 1 and 2 are rigged to fixed boom positions. Units on booms 3-12 are rigged to booms mounted on a base plate with lockable casters.

Instrument Schedule

Static Generic

- ETC Source 4 Par MFL Pair
- ETC Source 4 10°
- ETC Source 4 14°
- ETC Source 4 19°
- ETC Source 4 26°
- ETC Source 4 Jnr 25-50°
- ETC Source 4 Zoom 15-30deg
- Selecon Rama 1.2kW Fresnel
- PAR-16 Birdie

Static & Moving LED

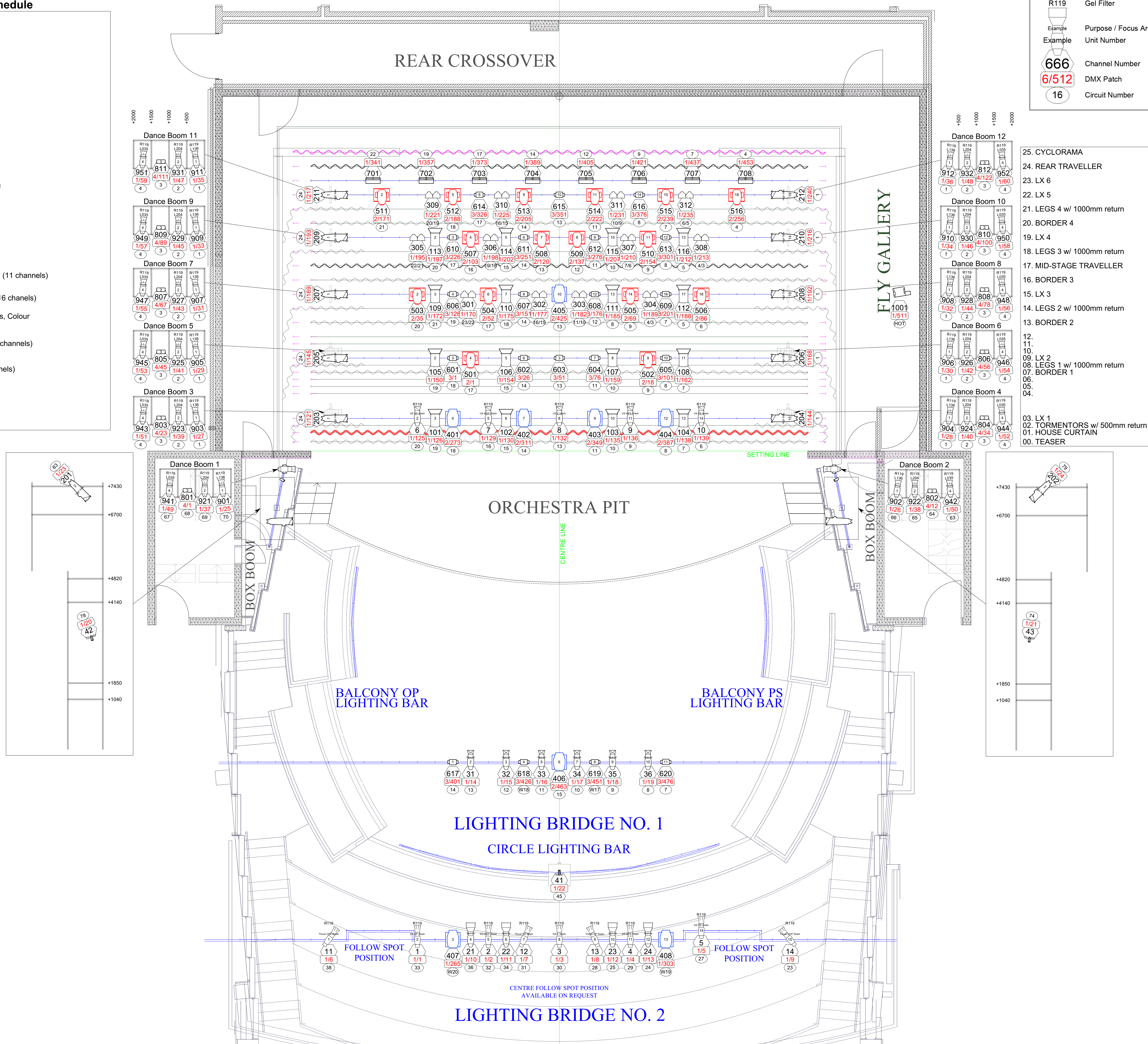
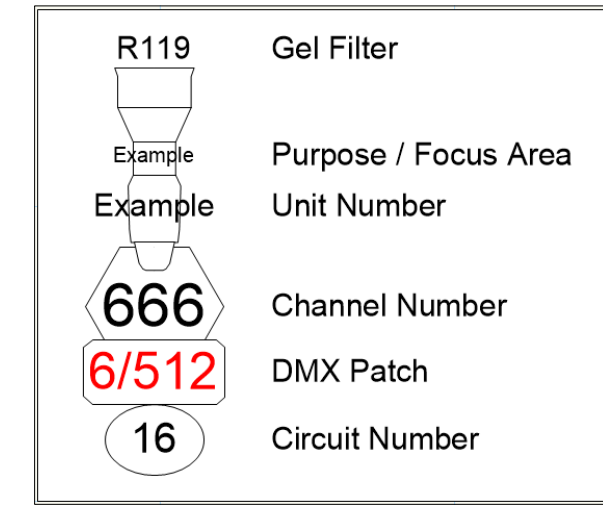
- Show Technology Hex-Par 12 (11 channels)
- Chauvet Ovation CYC 1 FC (16 channels)
- Martin MAC Aura (25 channels, Colour Correction Off)
- Martin Rush MH-1 Profile (17 channels)
- EK Lights E1 Profile (38 channels)

Haze

- Look Solutions Unique 2.1

Layer Full 1.1 (43 ch) [sACN]			
A	4001	17/1	4025 19/87
R	4002	17/44	4026 19/130
K	4003	17/87	4027 19/173
A	4004	17/130	4028 19/216
O	4005	17/173	4029 19/259
S	4006	17/216	4030 19/302
A	4007	17/259	4031 19/345
M	4008	17/302	4032 19/388
E	4009	17/345	4033 19/431
D	4010	17/388	4034 20/1
I	4011	17/431	4035 20/44
A	4012	18/1	4036 20/87
S	4013	18/44	4037 20/130
E	4014	18/87	4038 20/173
R	4015	18/130	4039 20/216
V	4016	18/173	4040 20/259
E	4017	18/216	4041 20/302
R	4018	18/259	4042 20/345
E	4019	18/302	4043 20/388
R	4020	18/345	4044 20/431
E	4021	18/388	4045 21/1
R	4022	18/431	4046 21/44
E	4023	19/1	4047 21/87
R	4024	19/44	4048 21/130

HOUSE LX	
2001	1/501
	1/502



- 25. CYCLORAMA
- 24. REAR TRAVELLER
- 23. LX 6
- 22. LX 5
- 21. LEGS 4 w/ 1000mm return
- 20. BORDER 4
- 19. LX 4
- 18. LEGS 3 w/ 1000mm return
- 17. MID-STAGE TRAVELLER
- 16. BORDER 3
- 15. LX 3
- 14. LEGS 2 w/ 1000mm return
- 13. BORDER 2
- 12.
- 11.
- 10.
- 09. LX 2
- 08. LEGS 1 w/ 1000mm return
- 07. BORDER 1
- 06.
- 05.
- 04.
- 03. LX 1
- 02. TORMENTORS w/ 500mm return
- 01. HOUSE CURTAIN
- 00. TEASER